

nh00od

**O CAMINHO CARBONO ZERO PARA OS
EDIFÍCIOS DO FUTURO**

III CONFERÊNCIA DA PROMOÇÃO
IMOBILIÁRIA

PEDRO VASCONCELLOS



10.000 + tons



150.000 Pedros



10.000 + tons

40% edifícios



Quais os gases de efeito estufa que são emitidos pelos edifícios?



DIÓXIDO DE CARBONO **10.000 + tons**

80%



METANO

12%



OUTROS

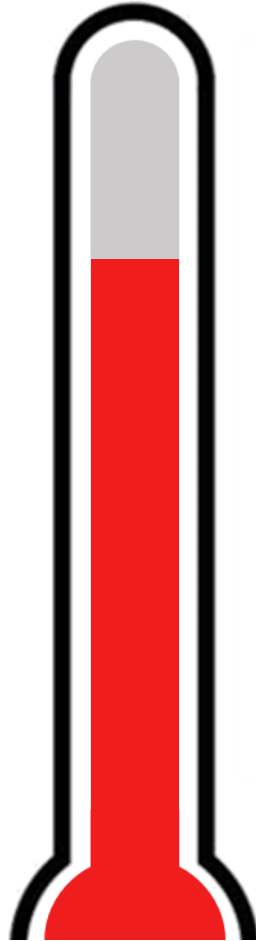
8%





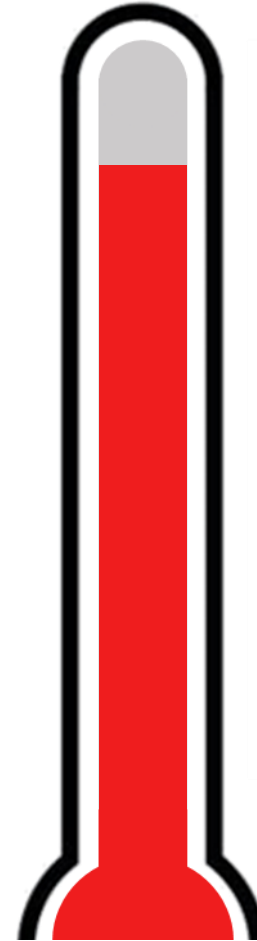
80%

DIÓXIDO DE CARBONO

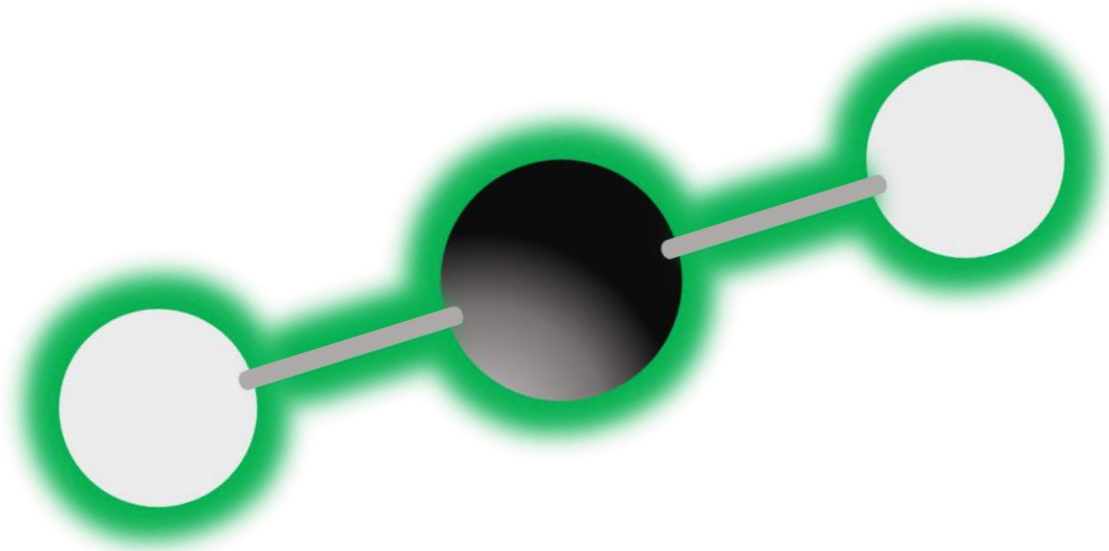


12%

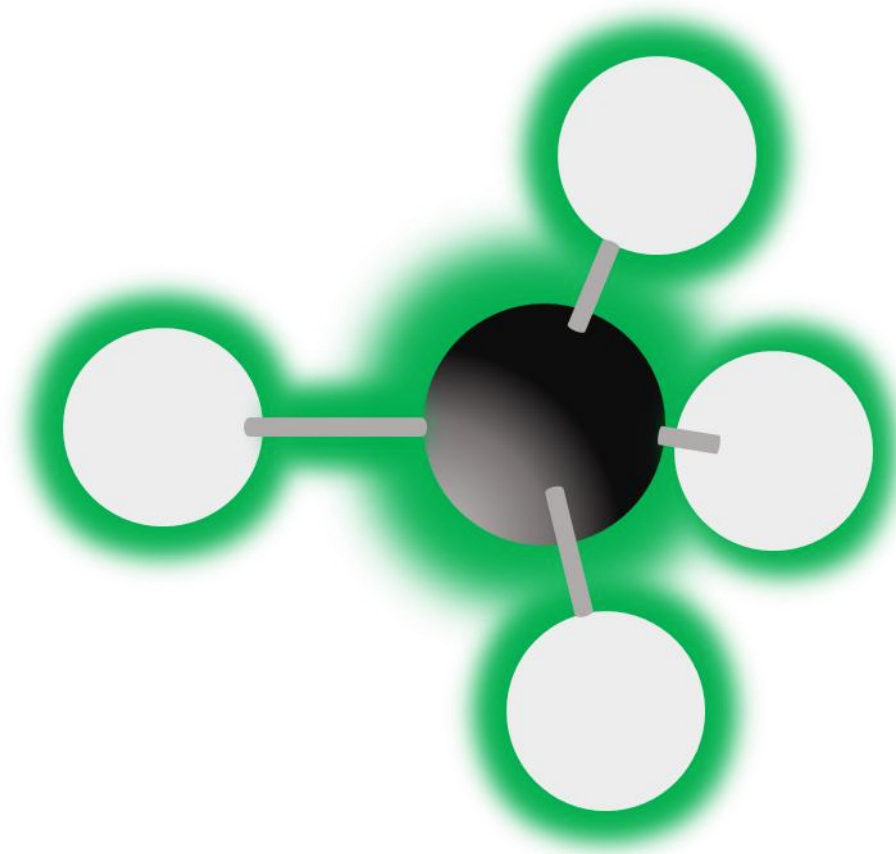
METANO



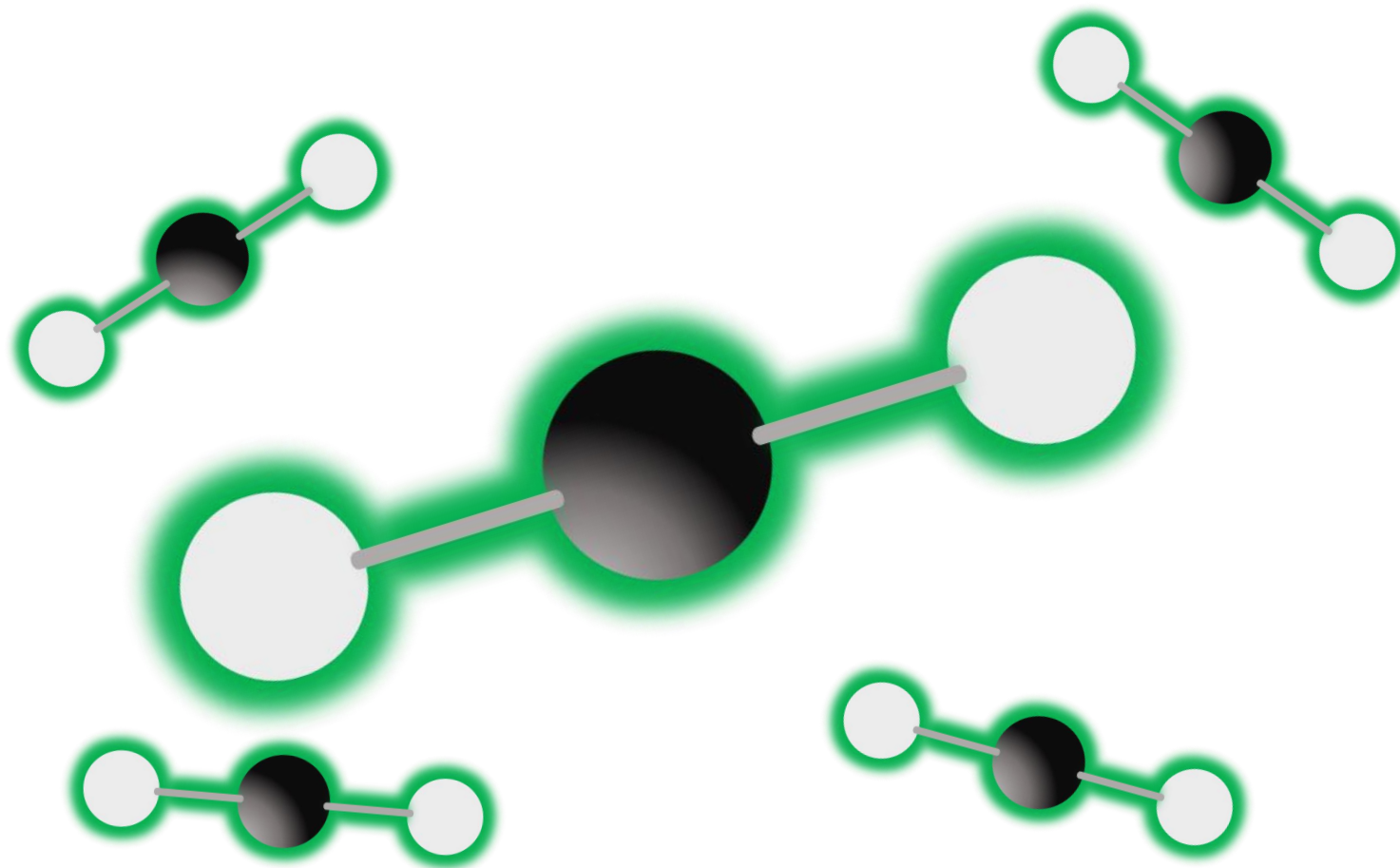
DIÓXIDO DE CARBONO



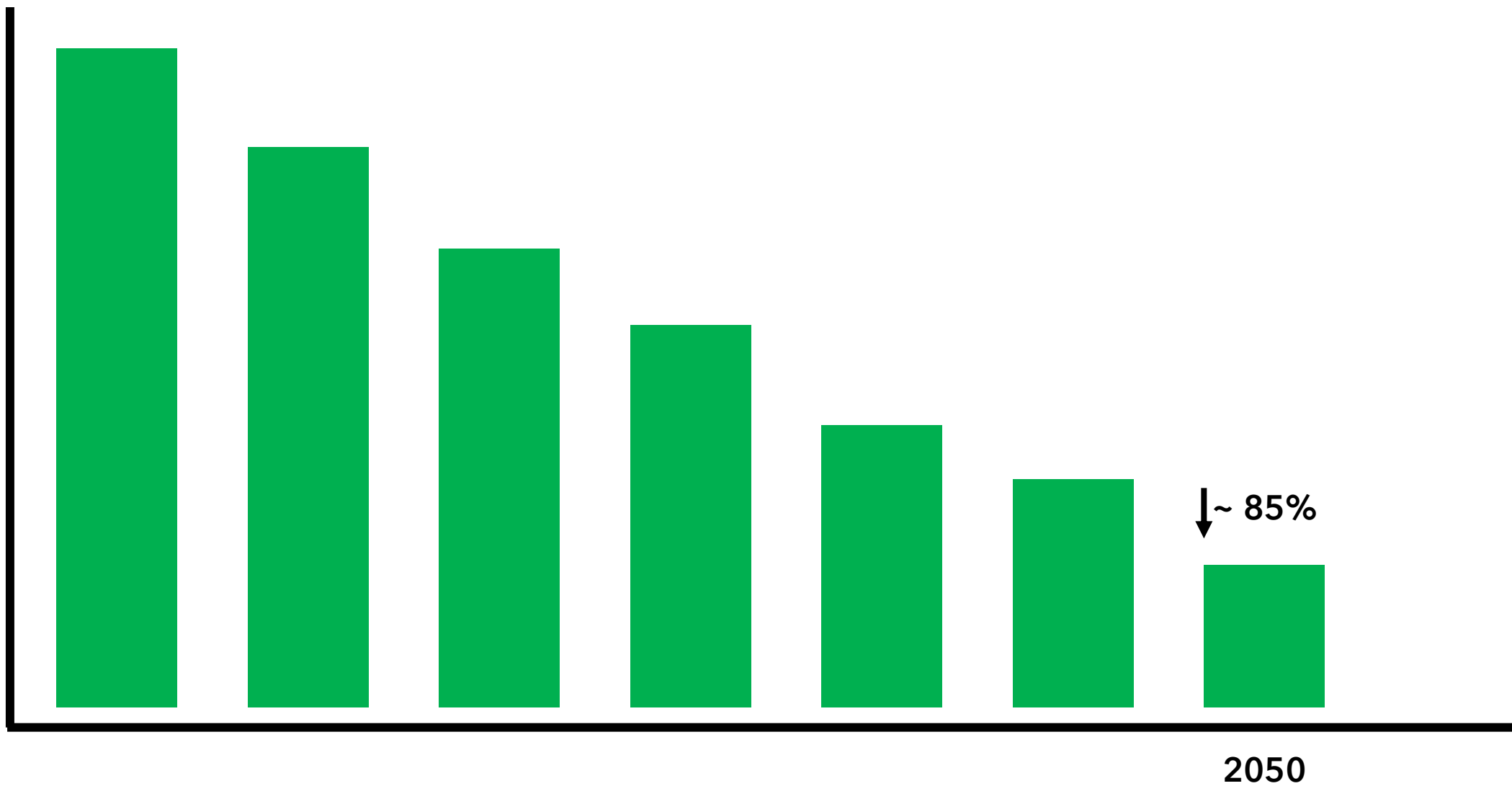
METANO



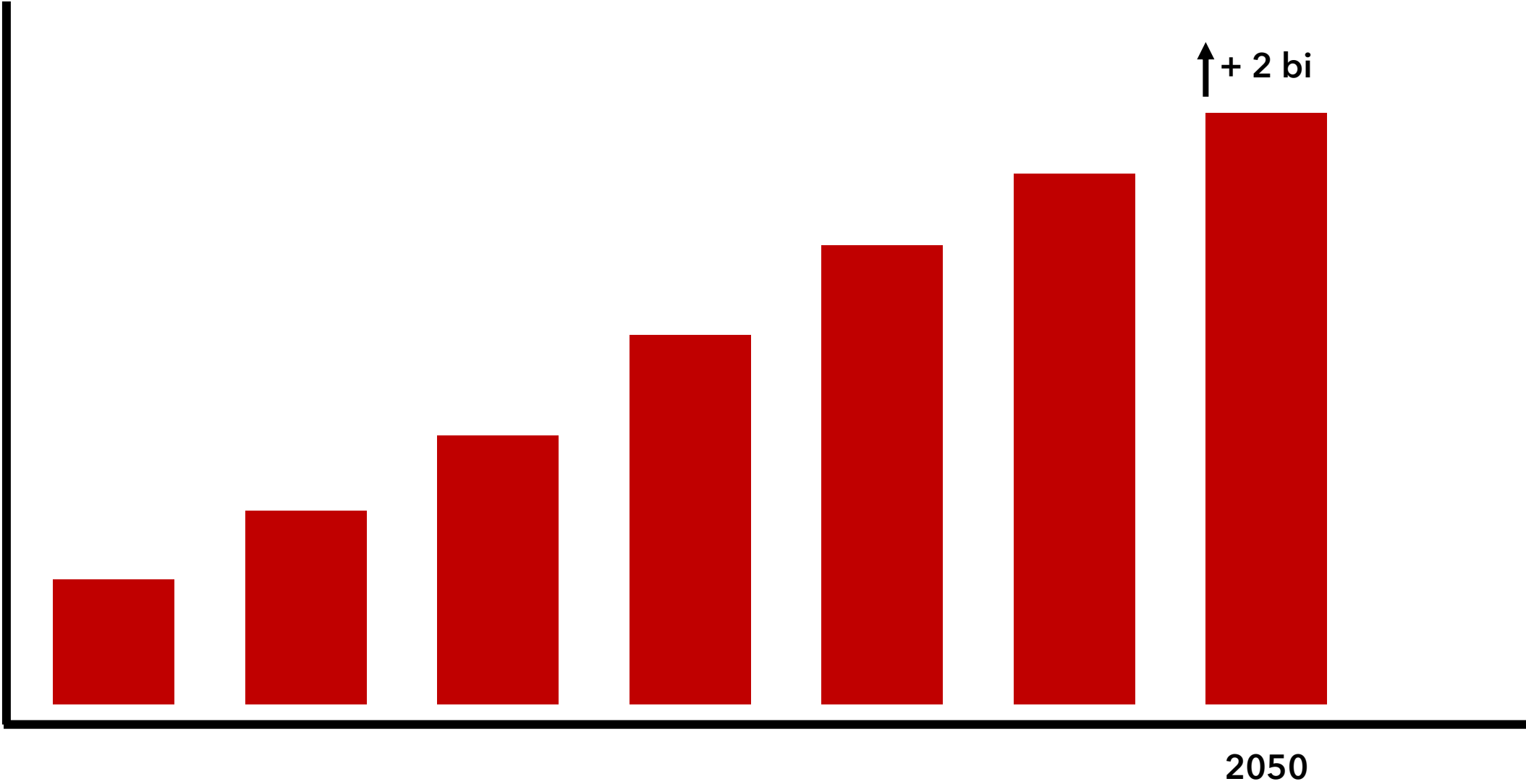
DIÓXIDO DE
CARBONO

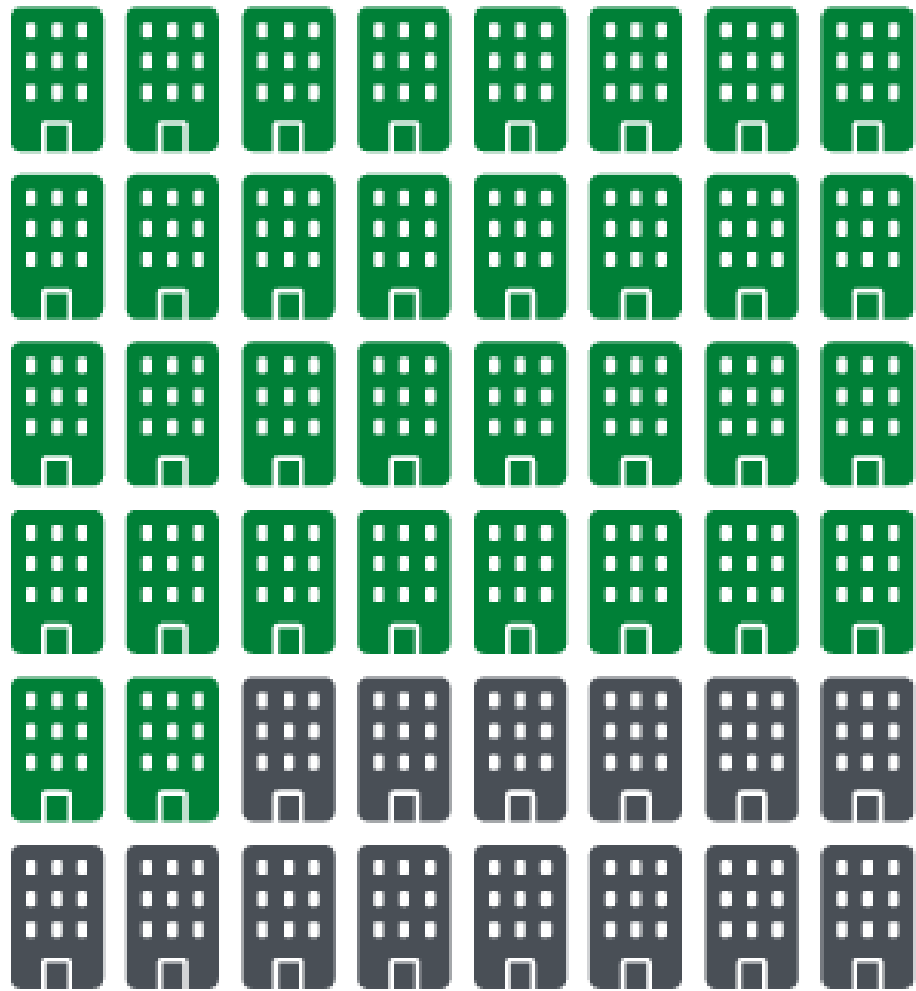


Redução das emissões de Gases de Efeito Estufa



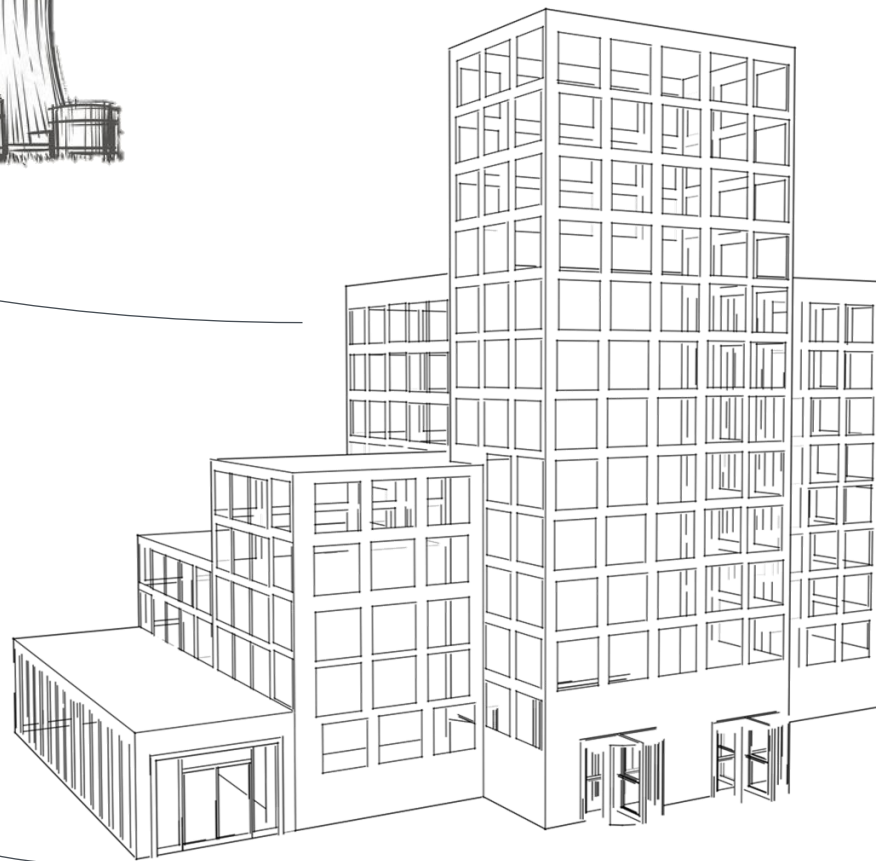
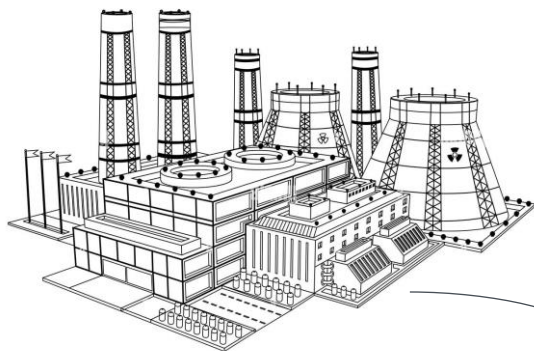
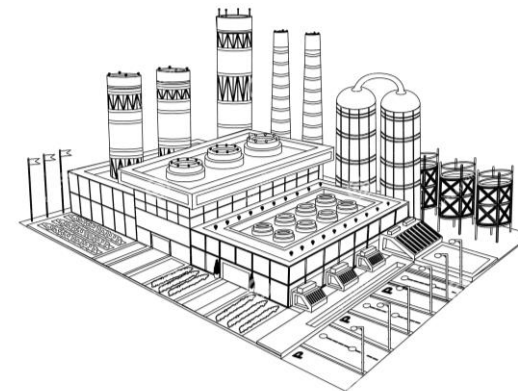
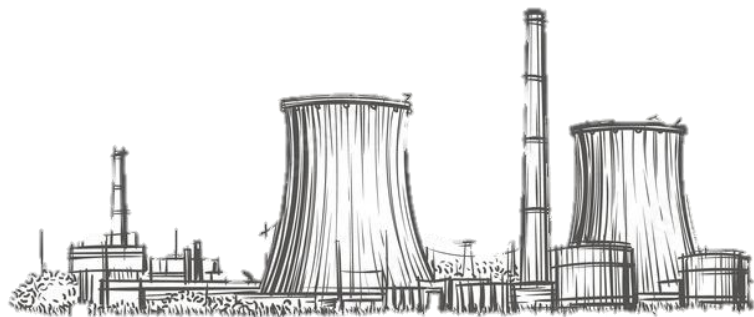
Aumento Populacional Global

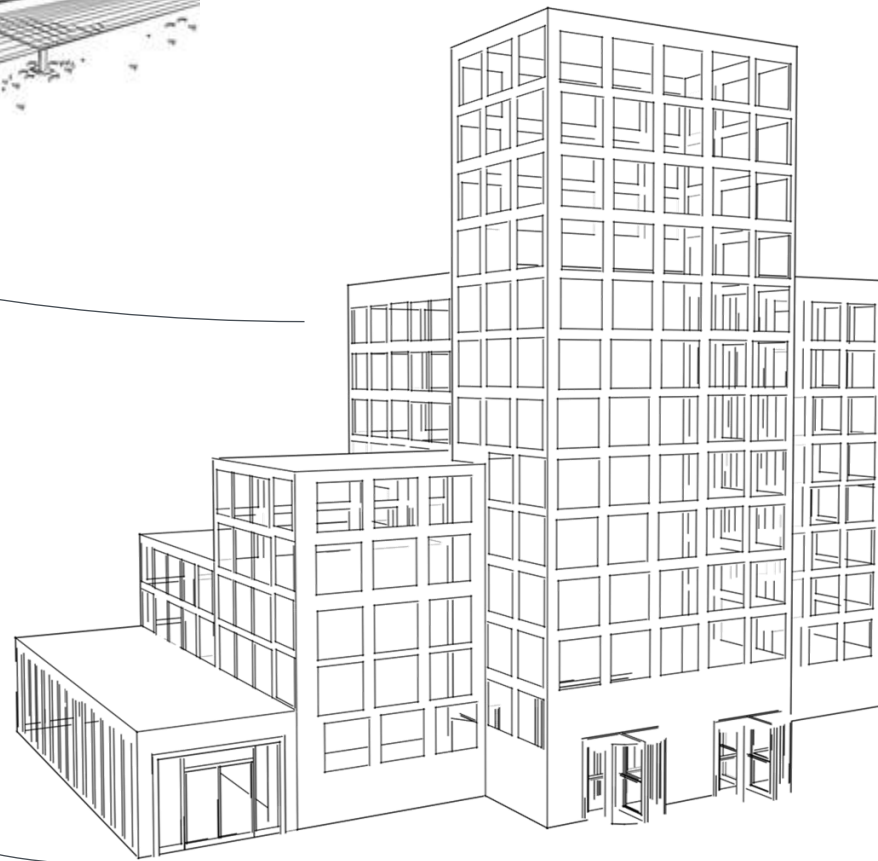
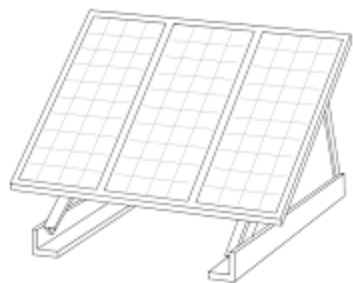
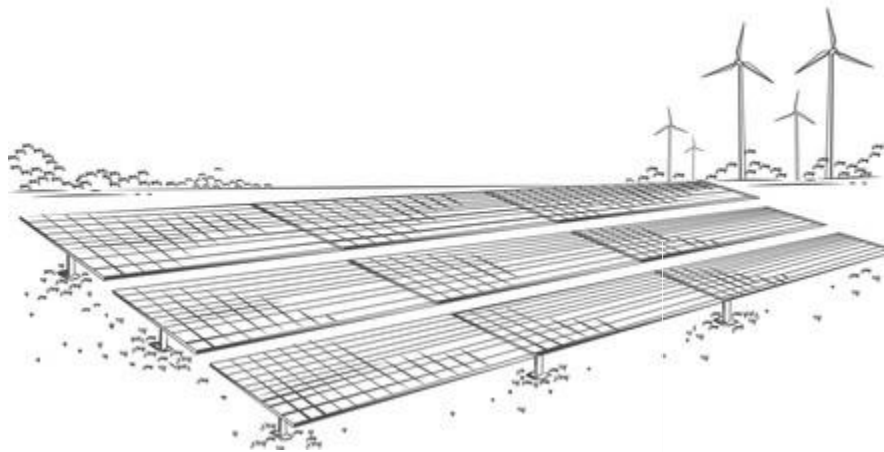


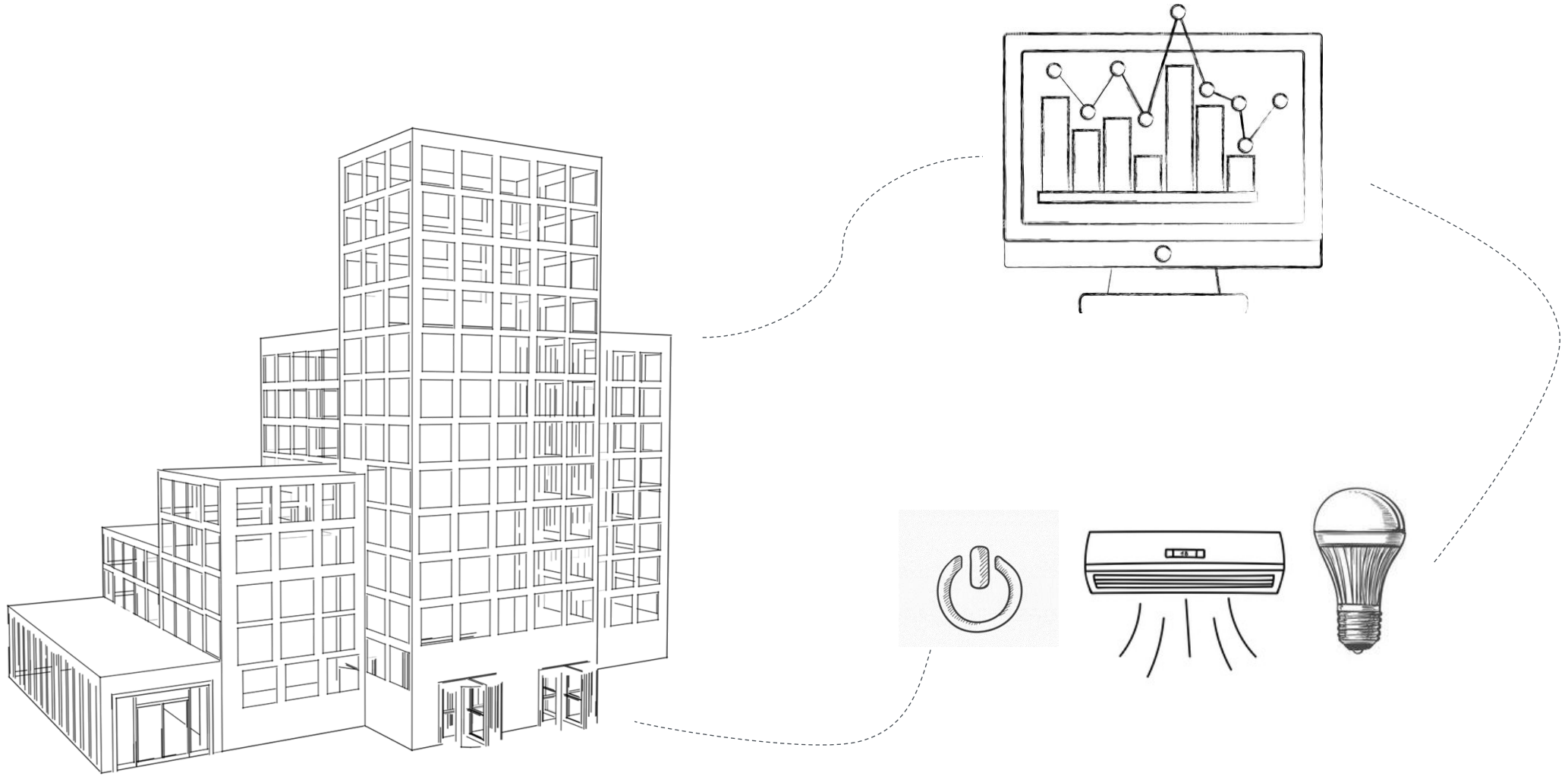


70%
operação

30%
construção e
demolição

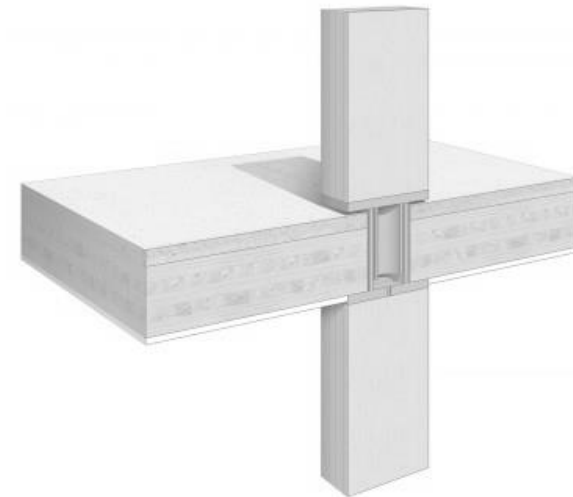








vidros com
produção
fotovoltaica



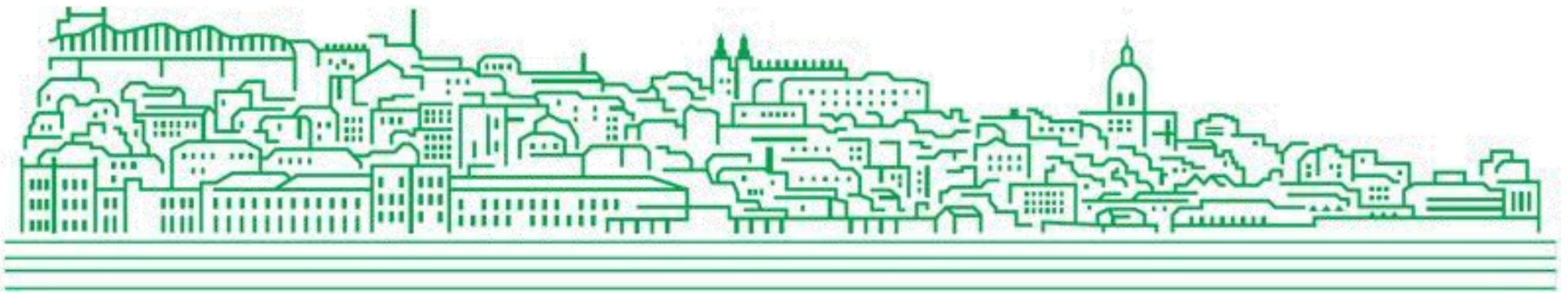
mass timber

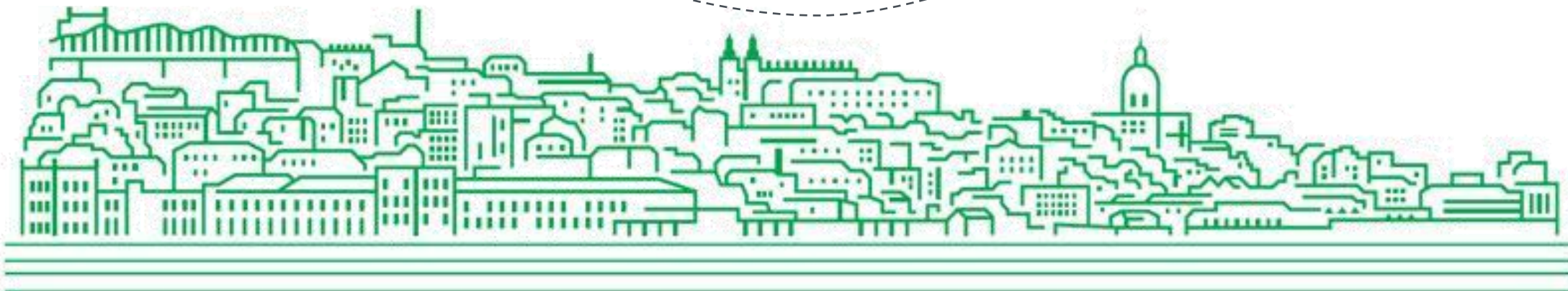
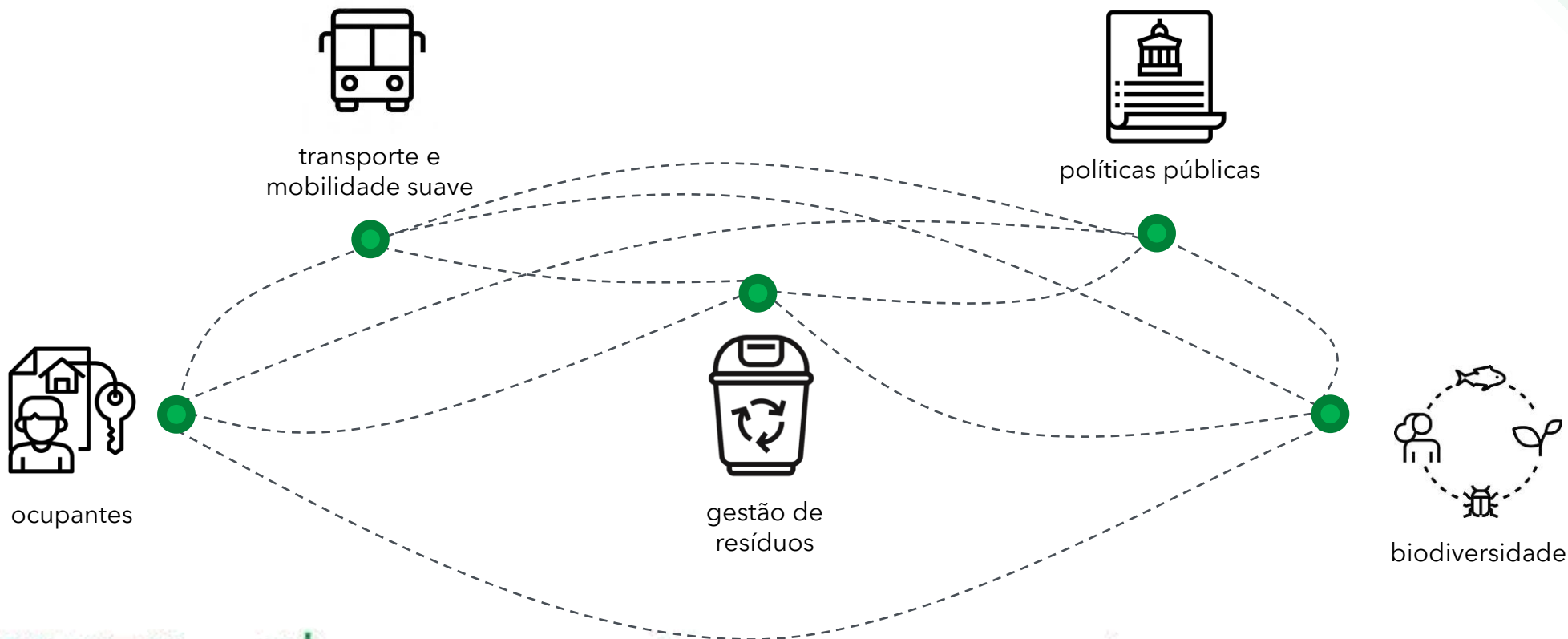


Genebra - utilização da água do lago para resfriamento dos edifícios



Olhar os edifícios de forma isolada é suficiente para a descarbonização?





Resiliência Climática dos Edifícios

↘ Down trend
→ No sig. change
↗ Upward trend

Best Case
 1.5°C pathway
 (RCP 2.6 W/m²)

Intermediate scenario
 2.0°C pathway
 (RCP 4.5 W/m²)

Current Policies
 2.5°C pathway
 (RCP 8.5 W/m²)

Risk	Best Case 1.5°C pathway (RCP 2.6 W/m ²)			Intermediate scenario 2.0°C pathway (RCP 4.5 W/m ²)			Current Policies 2.5°C pathway (RCP 8.5 W/m ²)		
	2050	2100		2050	2100		2050	2100	
Drought Stress	55%	10%	↘	65%	70%	↗	75%	100%	↗
Fire Stress	60%	58%	↘	60%	60%	→	60%	65%	↗
Heat Stress	46%	40%	↘	50%	52%	→	52%	60%	↗
Precipitation Stress	40%	40%	→	40%	40%	→	40%	37%	→
Flash Flood	30%	30%	→	30%	30%	→	30%	30%	→
Extratropical Storm	20%	20%	→	20%	20%	→	20%	20%	→
Earthquake	20%	20%	→	20%	20%	→	20%	20%	→
Tornado	20%	20%	→	20%	20%	→	20%	20%	→
River Flood	0%	0%	→	0%	0%	→	0%	0%	→
Sea Level Rise	-10%	-10%	→	-10%	-10%	→	-10%	-10%	→
Tsunami	-10%	-10%	→	-10%	-10%	→	-10%	-10%	→

Os investimentos para a descarbonização devem ser feitos já



Pensar em todo o território é essencial



Informação, informação, informação

nh0^od

OBRIGADO

Pedro Mello Vasconcellos
pvasconcellos@nhood.com